

---

---

# COASTAL LETTERS



NEWSLETTER OF THE COASTAL AND MARINE GEOGRAPHY SPECIALTY GROUP OF  
THE ASSOCIATION OF AMERICAN GEOGRAPHERS

Vol. 15, No. 1

Website: [http://aag\\_coma.homestead.com](http://aag_coma.homestead.com)

February, 2003

---

## Table of Contents

Specialty Group Officers	1
<a href="#">Membership Renewal Reminder</a>	2
<a href="#">Nominations for the Board</a>	2
<a href="#">R. J. Russell Award Nominations</a>	2
<a href="#">COMA Sponsored Sessions at AAG'2003</a>	2
<a href="#">Papers &amp; Posters of General Interest by Title</a>	8
<a href="#">Dr. James Allen Special Session</a>	9
<a href="#">Coasts Under Stress II: IGU Special Sessions</a>	9
<a href="#">Field Trips at AAG'2003</a>	9
<a href="#">Coastal GeoTools'03 Conference Notes</a>	10
<a href="#">Upcoming Conferences</a>	11
<a href="#">University of Southern Mississippi Faculty Positions</a>	11
<a href="#">Musings from the Chair – Klaus J. Meyer-Arendt</a>	12

## Specialty Group Officers

Klaus J. Meyer-Arendt, Chair  
Dept. of Environmental Studies  
University of West Florida  
11000 University Parkway  
Pensacola, FL 32514  
Phone: (850) 474-2792  
E-mail: [kjma@uwf.edu](mailto:kjma@uwf.edu)

Diane Horn, Vice-Chair  
School of Geography  
Birkbeck College  
7-15 Gresse St  
London W1P 2LL  
England (UK)  
Phone: 44 (207) 631-6480  
E-mail: [d.horn@bbk.ac.uk](mailto:d.horn@bbk.ac.uk)

Steven Namikas, Secretary-Treasurer  
Department of Geography and Anthropology  
Louisiana State University  
Baton Rouge, LA 70803  
Phone: (225) 578-6142  
E-mail: [snamik1@lsu.edu](mailto:snamik1@lsu.edu)

Philip L. Chaney, Member of the Board of Directors  
Department of Geography  
104A Tichenor Hall  
Auburn University, AL 36849  
Phone: 334-844-3420 or 4074  
E-mail: [chanep1@auburn.edu](mailto:chanep1@auburn.edu)

Michael Craghan, Board of Directors  
Middle Atlantic Center for Geography &  
Environmental Studies  
P.O. Box 20  
Manasquan, NJ 08735  
Phone: (732) 223-9878  
E-mail: [mcraghan@macges.org](mailto:mcraghan@macges.org)

Jennifer L. Rahn, Board of Directors  
Department of Geology  
Baylor University  
P.O. Box 97354  
Waco, TX 79798-7354  
Phone: (254) 710-2361  
E-mail: [Jennifer\\_Rahn@baylor.edu](mailto:Jennifer_Rahn@baylor.edu)

Richard C. Daniels, Editor  
Phone: (360) 705-7799  
E-mail: [danielri@wsdot.wa.gov](mailto:danielri@wsdot.wa.gov)

## Membership Renewal Reminder

Don't forget to renew your membership in the Coastal and Marine Geography Specialty Group. When you renew your membership with the AAG, please update your E-mail address to ensure delivery of the newsletter –remind your colleagues as well! Dues have not changed for 2003-04. Membership dues for the Specialty Group are currently \$1 for students and \$5 for regular and associate members.

## Nominations for the Board of Directors

The terms of Klaus J. Meyer-Arendt (Chair), Diane Horn (Vice-Chair), Michael Craghan (Board), and Philip Chaney (Board) end this year. In addition, Richard C. Daniels, our Newsletter Editor, has requested that he be “retired” as editor of the Newsletter. Per our Bylaws, Diane will succeed Klaus as Chair.

We will be opening up nominations for Vice-Chair, two Board of Directors, and for the Newsletter Editor. The Vice-Chair will serve a term of two years and then will succeed as Chair. The Vice-Chair’s duties include (1) organizing the judging of the student competitions and reporting the results and (2) Chair of the R.J. Russell Committee. The duties for the Board of Directors include: judging the Student Merit Awards, and serving on committees under the direction of the Vice-Chair. Members of the board shall also evaluate nominees and vote on the recipient for the R.J. Russell Award. These positions have two-year terms, as determined according to the timing of AAG annual meetings. The Newsletter Editor will serve an initial term of one-year, and then may be reelected on an annual basis after suitable words of praise have been give ☺.

Would you, or someone you know, like to get involved? If so, please pass along your nominations to Klaus J Meyer-Arendt or Diane Horn.

## The R. J. Russell Award Nominations

Nominations for the R.J. Russell Award should be directed to the Vice-Chair –Diane Horn (d.horn@geog.bbk.ac.uk). *Nominations for the current year should be made at least 2 weeks prior to the annual AAG meeting.* This specialty group award is presented in recognition of an individual's major contributions to the field of coastal or marine geography. These contributions may be in research, teaching, public service, and/or to the specialty group. Previous awardees include H. Jess Walker (1991), Fillmore Earney (1992), Norb Psuty (1993), Karl Nordstrom (1996), Doug Sherman (1997), Bernard Bauer (1999), Robin Davidson-Arnott (2000) and Patrik Hesp (2001). The R. J. Russell Award is named in honor of Richard Joel Russell (1895-1971). He was Dean of the Graduate School at Louisiana State University for 12 years, an organizer of the Coastal Studies Institute (1954), president of both the Association of American Geographers (1948) and Geological Society of America (1957), and named to the National Academy of Sciences (1959).

Nominations are accepted from COMA members, but nominees do not have to be members of either the specialty group or the AAG. Two nominations are required for consideration for the Award. At least one of the nominations must include a complete letter of nomination which will include one paragraph describing the nominees contributions to the field of coastal or marine geography and/or to the special interest group and a list of the nominees relevant activities and publications.

## COMA Sponsored Sessions at AAG'2003

Listed below are the sessions sponsored by the Coastal and Marine Specialty Group this year. To retrieve the abstract for any of the papers described below, visit <http://convention.allacademic.com/aag2003/schedule.html> and enter the presenter’s last name in the ‘Search’ box.

### Meetings of General Interest:

Meeting 3139: *AAG Specialty Group Chairs Meeting*

Tuesday, 3/4/2003 from 3:30 p.m. - 5:00 p.m.

Meeting 471: *Geomorphology Specialty Group Business Meeting*

Wednesday, 3/5/2003 from 7:30 p.m. - 8:30 p.m.

Meeting 6706: *Coastal/Marine Specialty Group Business Meeting*

Friday, 3/7/2003 from 7:30 p.m. - 8:30 p.m.

Meeting 7331: *AAG Awards Luncheon*

Saturday, 3/8/2003 from 11:40 a.m. - 2:00 p.m.

## **Sponsored Sessions:**

### **Session 4411: Remote Sensing and GIS Research within EPA EAGLE Programs**

- Wednesday, 3/5/2003 from 1:00 p.m. - 2:40 p.m.

(Sponsored by Remote Sensing Specialty Group, GIS Specialty Group, Coastal and Marine Specialty Group)

Organizer(s): Xiaojun Yang - University of West Florida, Luoheng Han - University of Alabama

Chair(s): James Morris - University Of South Carolina

Participant(s):

Xiaojun Yang - University of West Florida

Abstract Title: Characterizing Coastal Landscape Structure and Pattern Changes with Remote Sensing and GIS

Luoheng Han - University of Alabama

Abstract Title: Hyperspectral sensing of seawater over the Pensacola Bay

George E. Host - Natural Resources Research Institute

Abstract Title: Use of GIS and remotely sensed data for a priori identification of reference areas for Great Lakes coastal ecosystems

James Morris - University Of South Carolina

Abstract Title: Determinants of the spectral reflectance of the marsh grass *Spartina alterniflora* and a neural network classification of a coastal landscape

### **Session 4505: The Social and Economic Dimensions of Environment and Environmental Change in Southern Louisiana**

- Wednesday, 3/5/2003 from 3:00 p.m. - 4:40 p.m.

(Sponsored by Hazards Specialty Group, Coastal and Marine Specialty Group, Environmental Perception and Behavioral Geography)

Organizer(s): Ron R. Hagelman - University of New Orleans

Chair: Ron R. Hagelman - University of New Orleans

Participant(s):

Pamela J. Jenkins - University Of New Orleans

Abstract Title: Identity and Place: A Case Study in South Louisiana

Ron R. Hagelman - University of New Orleans

Abstract Title: Economy on the edge: Commerce, environment, and change in coastal Louisiana

JoAnne D. Darlington - Western Illinois University

Abstract Title: Social Identity and Community Cohesion: Influential Factors Sustaining a Coastal Community

Scott A. Hemmerling - Louisiana State University

Abstract Title: Evaluating Environmental Equity: The Impacts of Outer Continental Shelf Oil Development on Selected Social Groups in Lafourche Parish, Louisiana

Shirley Laska - University Of New Orleans

Abstract Title: 'Restoring Louisiana Coastal Wetlands and Barrier Islands: The Public Policy Formulation Process after Policy Fails

### **Session 5103: GIS in Coastal and Marine Areas I - Thursday, 3/6/2003 from 8:00 a.m. - 9:40 a.m.**

(Sponsored by Coastal and Marine Specialty Group, GIS Specialty Group)

Organizer(s): Tiffany C. Vance - NOAA, Dawn J. Wright - Oregon State University

Chair: Tiffany C. Vance - NOAA

Participant(s):

Dawn J. Wright - Oregon State University

Abstract Title: Infrastructure for Data Sharing, Spatial Analysis, Resource Decision-Making, and Societal Impact: The Oregon Coastal Atlas

Eric G. Edlund - University of Montana

Abstract Title: The Moorea (French Polynesia) Online Geographic Information Service: Overcoming Obstacles to Public Participation

Joanne Halls - UNC Wilmington

Abstract Title: Habitat Assessment of the Oculina Banks Experimental Research Reserve Using Multi-Media and Internet GIS

David Green - University of Aberdeen

Abstract Title: Applying Geospatial Technologies to Weed Mat Monitoring and Mapping: The Ythan Estuary, NE Scotland

**Session 5203: GIS in Coastal and Marine Areas II** - Thursday, 3/6/2003 from 10:00 a.m. - 11:40 a.m.

(Sponsored by GIS Specialty Group, Coastal and Marine Specialty Group)

Organizer(s): Tiffany C. Vance - NOAA, Dawn J. Wright - Oregon State University

Chair: Dawn J. Wright - Oregon State University

Participant(s):

Dawn J. Wright - Oregon State University (Introduction)

Tammie Middleton - U.S. Geological Survey

Abstract Title: Visualizing the Bathymetry and Geology of the U.S. East Coast

Lawrence R. Handley - US Geological Survey

Abstract Title: Development of a Shoreline Using Topographic / Bathymetric Data for a portion of the Louisiana Coast

Tiffany C. Vance - NOAA

Abstract Title: GIS-based VRML visualizations for the Cordell Bank Marine Sanctuary

Mauren Sioh -

Abstract Title: An integrated decision support system for shellfish resource management

Dawn J. Wright - Oregon State University (Discussant)

**Session 5604: Hurricanes 1** - Thursday, 3/6/2003 from 1:00 p.m. - 2:40 p.m.

(Sponsored by Climate Specialty Group, Hazards Specialty Group, Coastal and Marine Specialty Group)

Chair & Organizer: Kam-Biu Liu - Louisiana State University

Participants(s):

Jay S. Hobgood - Ohio State University

Abstract Title: Rapid Intensification of Tropical Cyclones Over the Atlantic Ocean

Sytske Kimball - University of South Alabama

Abstract Title: A 13-year climatology of North Atlantic Tropical Cyclone size and intensity

Philip L. Chaney - Auburn University

Abstract Title: Spatial Characteristics of Category 5 Hurricanes

Keith G. Blackwell - University Of South Alabama

Abstract Title: Doppler Radar-Observed Low-Level Wind Surges in Hurricane Danny's (1997) Eyewall

Arleen Hill - Bucknell University

Abstract Title: Winds of Change: Hurricane Evacuation Culture in Horry County, South Carolina

**Session 5504: Hurricanes 2: Historical Records and Societal Response** - Thursday, 3/6/2003 from 3:00 p.m. - 4:40 p.m.

(Sponsored by Climate Specialty Group, Hazards Specialty Group, Coastal and Marine Specialty Group)

Chair & Organizer: Kam-Biu Liu - Louisiana State University

Participant(s):

James B. Elsner - Florida State University

Abstract Title: Predictive Climatology of U.S. Hurricanes

Brian Bossak -

Abstract Title: Early 19th Century U.S. Hurricanes: A GIS Tool

Pedro Ribera - Universidad Pablo De Olavide

Abstract Title: Typhoons in the Western Pacific Basin from Spanish and related sources

Kai Chi Leung - University Of Minnesota, Minneapolis

Abstract Title: Mapping Exposure to Tropical Cyclone Risk in Southeast Asia

Kam-Biu Liu - Louisiana State University

Abstract Title: New Estimates of Landfall Probabilities for Catastrophic Hurricanes Along the U.S. Gulf Coast

**Session 5604: Hurricanes 3** - Thursday, 3/6/2003 from 5:00 p.m. - 6:40 p.m.  
(Sponsored by Climate Specialty Group, Hazards Specialty Group, Coastal and Marine Specialty Group)

Chair & Organizer: Kam-Biu Liu - Louisiana State University

Participant(s):

Stephen Leatherman - Florida International University

Abstract Title: Hurricane Impact Mapping

Ivor L. Van Heerden - Louisiana State University

Abstract Title: Applicability of the ADCIRC Storm Surge Model to coastal Louisiana - 2002 Hurricane Season

Klaus J. Meyer-Arendt - University of West Florida

Abstract Title: Hurricane Isadore in Yucatán: Yet Another Factor in Coastal Landscape Degradation

Gregory W Stone - Louisiana State University

Abstract Title: Metocean Observations and Impacts on the Northern Gulf Coast: Tropical Storm Isadore and Hurricane Lili

E. Baker - Florida State University

Abstract Title: Adoption of Window Protection for Hurricanes

**Session 6106: Coastal Hazards** - Friday, 3/7/2003 from 8:00 a.m. - 9:40 a.m.  
(Sponsored by Coastal and Marine Specialty Group, International Geographical Union)

Organizer(s): Douglas J. Sherman - Texas A&M Univ., Norbert P. Psuty - Rutgers University, Klaus J. Meyer-Arendt - University of West Florida

Chair: Bernard O. Bauer - University of Southern California

Participant(s):

Diane P. Horn - Birkbeck College

Abstract Title: Ending the sandbag culture: the need for a new approach to mitigating UK coastal hazards

Allan T. Williams - University Of Glamorgan

Abstract Title: Public Perception of Coastal Structures: Groins

Antonio Klein - Universidad de Vale Do Itajai

Abstract Title: Analysis of hazards associated with sea bathing: results of seven years work in oceanic beaches of Santa Catarina state, southern Brazil

Andrew Short - University Of Sydney

Abstract Title: Australian Beaches – Characteristics, Hazards, Risk and Management

**Session 6206: Coastal/Marine Student Presentations** - Friday, 3/7/2003 from 10:00 a.m. - 11:40 a.m.  
(Sponsored by Coastal and Marine Specialty Group)

Chair & Organizer: Klaus J. Meyer-Arendt - University of West Florida

Participant(s):

Jean Taylor Ellis - Texas A&M University

Abstract Title: Effects of sampling frequency on wave characterization.

Andreas Baas - University of Southern California

Abstract Title: Formation and behavior of aeolian streamers

Heidi Lannon - University of Florida

Abstract Title: The use of coastal geomorphology in the evaluation of public land use policy in northeast Florida.

Christian Patrick Heidkamp - University of Connecticut

Abstract Title: Capital, Gentrification, and Social Change on the Waterfront

Elizabeth Watson - UC Berkeley

Abstract Title: Coastal Subsidence in the Santa Clara Valley: Implications For Future Sea Level Rise

Brian Plaster - Southwest Texas State University

Abstract Title: Beach cusp morphology on Malaquite Beach, TX: A case study

**Session 6406: Coastal Impacts of Sea-Level Rise** - Friday, 3/7/2003 from 1:00 p.m. - 2:40 p.m.  
(Sponsored by Coastal and Marine Specialty Group, International Geographical Union)

Organizer(s): Douglas J. Sherman - Texas A&M Univ., Norbert P. Psuty - Rutgers University, Klaus J. Meyer-Arendt - University of West Florida

Chair: Douglas J. Sherman - Texas A&M Univ.

Participant(s):

Roland P. Paskoff - University Lyon

Abstract Title: Potential impacts of accelerated sea-level rise in France

Karol W. Rotnicki - Adam Mickiewicz University (Poznan)

Abstract Title: Main components of accelerated sea-level rise on the Polish Baltic coast in the years 1951-1990

M. Eugenia S. De Albergaria Moreira - University Of Lisbon

Abstract Title: Geomorphological Evolution of the Southern Coast of Mozambique

M. Shahidul Islam - University Of Chittagong

Abstract Title: Quaternary Relative Sea Level Movements and the Geomorphic Evolution of St. Martin's Island in Bangladesh

Robin Davidson-Arnott -

Abstract Title: Modeling the effects of sea level rise - beyond the Bruun Rule

**Session 6506: Coastal Impacts of Oil and Gas Exploitation** - Friday, 3/7/2003 from 3:00 p.m. - 4:40 p.m.  
(Sponsored by Coastal and Marine Specialty Group, International Geographical Union)

Organizer(s): Douglas J. Sherman - Texas A&M Univ., Norbert P. Psuty - Rutgers University, Klaus J. Meyer-Arendt - University of West Florida

Chair: Roland P. Paskoff - University Lyon

Participant(s):

Donald W. Davis - Louisiana State University

Abstract Title: The vulnerability of Louisiana's hydrocarbon production: hurricanes, land loss, and other issues.

Charles K. Armbruster - Louisiana Oil Spill Coordinators Office

Abstract Title: Louisiana's Regional Restoration Planning Program

DeWitt Braud - Louisiana State University

Abstract Title: Louisiana Oil Spill Contingency Plan Map

Michael A. Camille - University of Louisiana at Monroe

Abstract Title: A Pipeline GIS for Ouachita Parish, Louisiana

William Ritchie - Lancaster University

Abstract Title: The efficiency of dune restoration after pipeline landfalls in Scotland over a 30-year time span

**Meeting & Session 6706: Coastal/Marine Specialty Group Business Meeting & A Tribute to Evelyn Pruitt**  
- Friday, 3/7/2003 from 7:30 p.m. - 8:30 p.m.

(Sponsored by Coastal and Marine Specialty Group, International Geographical Union (IGU))

Organizer(s): Douglas J. Sherman - Texas A&M Univ., Norbert P. Psuty - Rutgers University, Klaus J. Meyer-Arendt - University of West Florida

Chair: Klaus J. Meyer-Arendt - University of West Florida

Participant(s):

Harley Jesse Walker - Louisiana State University

Abstract Title: Evelyn L. Pruitt and Coastal Research

**Session 7106: Coastal Dunes: A Tribute to James R. Allen** - Saturday, 3/8/2003 from 8:00 a.m. - 9:40 a.m.  
(Sponsored by Coastal and Marine Specialty Group, International Geographical Union)

Organizer(s): Douglas J. Sherman - Texas A&M Univ., Norbert P. Psuty - Rutgers University, Klaus J. Meyer-Arendt - University of West Florida

Chair: Norbert P. Psuty - Rutgers University

Participant(s):

Norbert P. Psuty - Rutgers University

Abstract Title: Displacement and Recovery in a Coastal Fore-dune, Talisman - Barrett Beach, Fire Island National Seashore, USA

Karl F. Nordstrom - Rutgers University

Abstract Title: Assessing sediment transport and restoration potential on developed coastal dunes

Julian D. Orford - Queen's University, Belfast

Abstract Title: Sea level control on Holocene coastal dune formation around the British Isles

Patrick A. Hesp - Massey University

Abstract Title: Topographic Control Of Offshore Winds And Dynamics Of Fore-dunes And Climbing Dunes On A Leeward East Coast, New Zealand

**Session 7206: Beaches and Shores** - Saturday, 3/8/2003 from 10:00 a.m. - 11:40 a.m.  
(Sponsored by Coastal and Marine Specialty Group, International Geographical Union)

Organizer(s): Douglas J. Sherman - Texas A&M Univ., Norbert P. Psuty - Rutgers University, Klaus J. Meyer-Arendt - University of West Florida

Chair: Steven Namikas - Louisiana State University

Participant(s):

Steven Namikas - Louisiana State University

Abstract Title: Influence of Atmospheric Conditions in Aeolian Transport Modeling

Jeff Ollerhead - Mount Allison University

Abstract Title: Shoreline monitoring at Cape Jourimain, New Brunswick, Canada

Paul A. Gares - East Carolina University

Abstract Title: Using LIDAR to monitor a beach nourishment project at Wrightsville Beach, NC

Nancy L. Jackson - New Jersey Institute Of Technology

Abstract Title: Beach Nourishment in Estuaries: Examples from Delaware Bay, USA

Bernard O. Bauer - University of Southern California

Abstract Title: Variability in Levee-Bank Erosion: Sacramento River Delta, California

**Session 7406: Estuaries and Lagoons** - Saturday, 3/8/2003 from 1:00 p.m. - 2:40 p.m.  
(Sponsored by Coastal and Marine Specialty Group, International Geographical Union)

Organizer(s): Douglas J. Sherman - Texas A&M Univ., Norbert P. Psuty - Rutgers University, Klaus J. Meyer-Arendt - University of West Florida

Chair: Antony R. Orme, Univ. of California at Los Angeles

Participant(s):

Antony R. Orme - University of California

Abstract Title: The morphodynamics of seasonal estuaries

Soraya Patchineelam - UFPR

Abstract Title: Sediment as Pollution to Guanabara Bay SE-Brazil

Jose Baptista Neto - FFP / UERJ

Abstract Title: Levels of Heavy Metals Pollution in the Sediments of Guanabara Bay-SE Brazil

Paolo Ciavola - University of Ferrara

Abstract Title: Bed instability in the lagoon of Venice generated by vessel passage: an experimental field study

So-Min Cheong - University of Washington

Abstract Title: The Control of Common Property and the Coast

**Session 7506: Dynamic Coasts** -Saturday, 3/8/2003 from 3:00 p.m. - 4:40 p.m.  
(Sponsored by Coastal and Marine Specialty Group, International Geographical Union (IGU))

Organizer(s): Douglas J. Sherman - Texas A&M Univ., Norbert P. Psuty - Rutgers University, Klaus J. Meyer-Arendt - University of West Florida

Chair: M. Eugenia S. De Albergaria Moreira - University Of Lisbon

Participant(s):

Enrique J. Schnack - Universidad Nacional De La Plata

Abstract Title: Storm Surges and Morphodynamics Along the East Buenos Aires Coast, Argentina

Nasip Mecaj - Albanian Academy Of Sciences

Abstract Title: River Deltas: The morphology and their morphodynamic evolution of the Adriatic Coast of Albania

J.K. Patterson Edward - Suganthi Devadason Marine Research Institute

Abstract Title: Crab fishery and its enhancement through Artificial Reef in Tuticorin Coast, Southeast Coast of India

## Papers & Posters of General Interest by Title

This list was generated using the keyword-search capability at the AAG Conference web site. To determine when a paper of interest is being presented, visit the AAG web site and search the database using the title or keywords provided below.

### Search Results by Keyword(s) "Coast" and/or "Marine"

1. Annual Progradational Layers Preserved in the Beaches of Southwest Washington
2. Assessing sediment transport and restoration potential on developed coastal dunes
3. Australian Beaches – Characteristics, Hazards, Risk and Management
4. 'Beach Party' and Beyond: The Southern California Coast and Its Representation in American Movies.
5. Characterizing Coastal Landscape Structure and Pattern Changes with Remote Sensing and GIS
6. Coastal Evolution and Early Human Settlement in Southern California
7. Coastal Subsidence in the Santa Clara Valley: Implications For Future Sea Level Rise
8. Crab fishery and its enhancement through Artificial Reef in Tuticorin Coast, Southeast Coast of India
9. Deliberative Privatization? Co-managing the Enclosure of Maine's Lobster Commons
10. Development of a Shoreline Using Topographic / Bathymetric Data for a portion of the Louisiana Coast
11. Displacement and Recovery in a Coastal Fore-dune, Talisman - Barrett Beach, Fire Island National Seashore, USA
12. Dugongs (Dugong dugon) in Cambodia and Vietnam: An Endangered Species in Recovering Countries
13. Economy on the edge: Commerce, environment, and change in coastal Louisiana
14. Effects of sampling frequency on wave characterization
15. Effects-based planning and marine farming: Spatial and process consequences in New Zealand
16. Emerging Local Governance for Coastal Management in China
17. Ending the sandbag culture: the need for a new approach to mitigating UK coastal hazards
18. Evelyn L. Pruitt and Coastal Research
19. Exploring the urban future of Santa Barbara, CA, using the What If – Planning Support System
20. Fleshing out the geographies of social movements: black communities on the Colombian Pacific coast and the aquatic space
21. Geomorphological Evolution of the Southern Coast of Mozambique
22. GIS-based VRML visualizations for the Cordell Bank Marine Sanctuary
23. Habitat Assessment of the Oculina Banks Experimental Research Reserve Using Multi-Media and Internet GIS
24. Hurricane Impact Mapping
25. Hurricane Isidore in Yucatán: Yet Another Factor in Coastal Landscape Degradation
26. Hurricane Mitch: Coastal Habitat Mapping
27. Hyperspectral sensing of seawater over the Pensacola Bay
28. Infrastructure for Data Sharing, Spatial Analysis, Resource Decision-Making, and Societal Impact: The Oregon Coastal Atlas
29. Levels of Heavy Metals Pollution in the Sediments of Guanabara Bay-SE Brazil
30. Louisiana Oil Spill Contingency Plan Map
31. New Estimates of Landfall Probabilities for Catastrophic Hurricanes Along the U.S. Gulf Coast
32. On the marginality of Africa: Commodification and contemporary slavery
33. Quaternary Relative Sea Level Movements and the Geomorphologic Evolution of St. Martin's Island in Bangladesh
34. Restoring Louisiana Coastal Wetlands and Barrier Islands: The Public Policy Formulation Process after Policy Fails
35. River Deltas: The morphology and their morphodynamic evolution of the Adriatic Coast of Albania



36. Sediment as Pollution to Guanabara Bay SE-Brazil
37. Spatial Demographic Model For Examining Boater Behaviour in Tampa Bay Florida
38. Storm Surges and Morphodynamics Along the East Buenos Aires Coast, Argentina
39. The Control of Common Property and the Coast
40. The Influence of National Flood Insurance Program to Coastal Development in Texas
41. The morphodynamics of seasonal estuaries
42. The use of coastal geomorphology in the evaluation of public land use policy in northeast Florida.
43. Topographic Control Of Offshore Winds And Dynamics Of Foredunes And Climbing Dunes On A Leeward East Coast, New Zealand
44. Tourism Typologies for Coastal Areas and the use of GIS: The case of Greece?
45. Use of GIS and remotely sensed data for a priori identification of reference areas for Great Lakes coastal ecosystems
46. Visualizing the Bathymetry and Geology of the U.S. East Coast

## Dr. James Allen Special Session

The Coastal and Marine Specialty Group has organized a Special Session in entitled *Coastal Dunes* in tribute to Dr. James R. Allen on Saturday, 3/8/2003 at 8:00 a.m. Dr Allen, who passed away unexpectedly last year, was a leader in the study of coastal dune morphology. For more details on Dr. Allen's research interests, please see *Coastal Letters*, Vol. 14, No. 2.

## Coasts Under Stress II: IGU Special Sessions

The IGU Coastal Commission and the Coastal and Marine Specialty Group of the Association of American Geographers are sponsoring a group of paper and poster sessions at the AAG meetings in New Orleans in March 2003. These paper presentations and a separate poster session will be held on the last two days of the AAG meeting, that is Friday and Saturday, March 7 and 8. A very informative field excursion will be held immediately after the paper sessions, departing from New Orleans on Sunday, March 9, and returning to New Orleans about mid-day on Thursday, March 13.

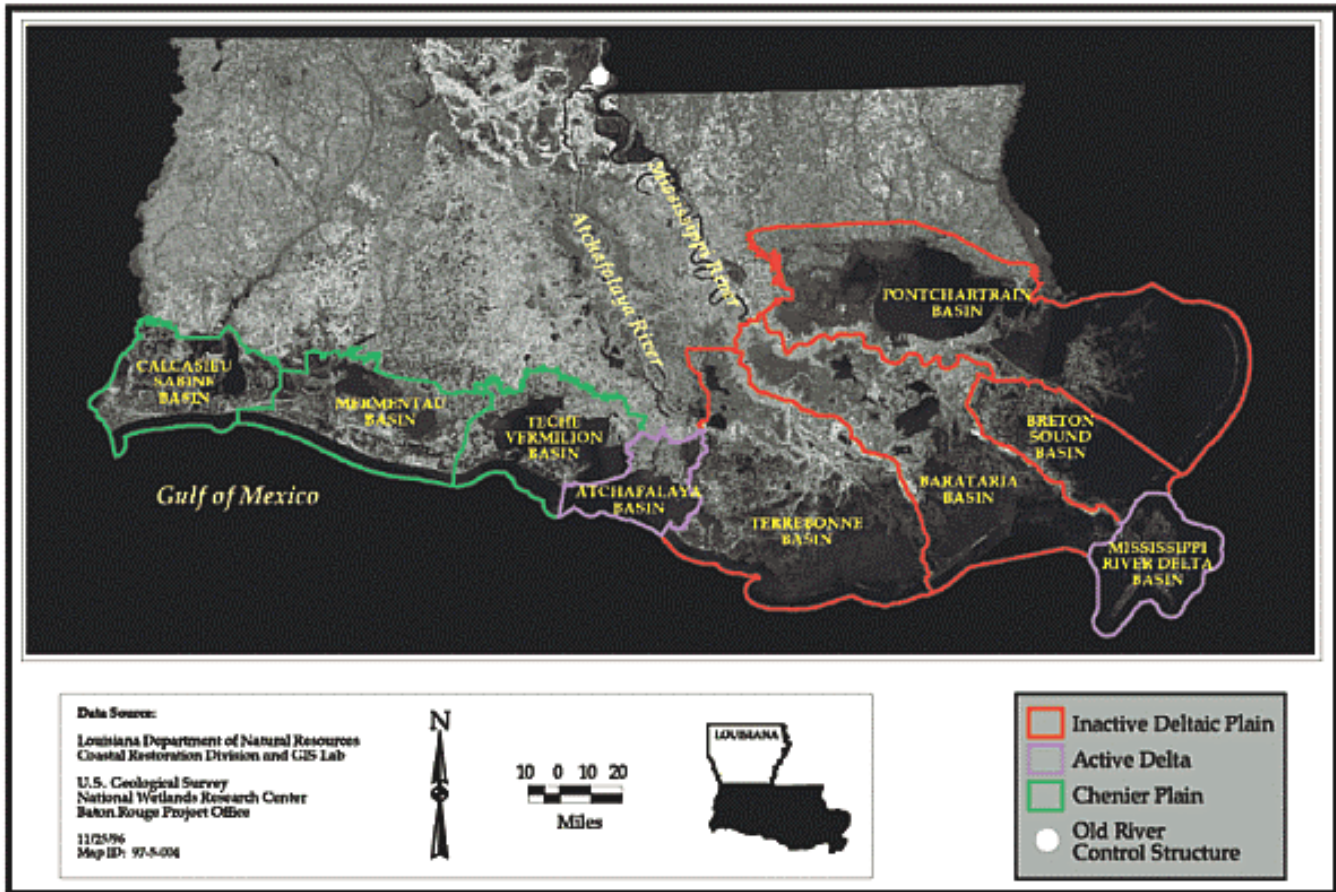
This gathering will mark the 25<sup>th</sup> anniversary of the exciting and rewarding meeting organized by H. Jess Walker at New Orleans in 1978 under the title of **Coasts Under Stress**. We hope that this occasion will be as successful and informative as the first. In keeping with the title, the general theme of many of the sessions will focus on issues of conflict and conflict resolution in the coastal zone. The following topics will be focused on during the presentations, stresses associated with oil and gas exploitation, sea-level rise, casino gambling, wetland loss and restoration, recreation and tourism, resource protection and exploitation, coastal erosion, coastal sediment management, coastal hazard management. For more information please contact Dr. Norbert Psuty ([psuty@imcs.rutgers.edu](mailto:psuty@imcs.rutgers.edu)).

## Field Trips at AAG'2003

The Coastal and Marine Specialty Group and the IGU Coastal Commission are sponsoring a field trip in conjunction with the Annual meeting. This field trip is going to coastal Louisiana, Mississippi, Alabama, and western Florida immediately after the coastal sessions in New Orleans. The field trip will leave from the Conference hotel at Sunday Morning, at 8:30 am on Sunday, March 9 and return to New Orleans at about 12:00 noon on Thursday, March 13. The trip has been organized by Denise Reed, University of New Orleans; Shea Penland, University of New Orleans; Greg Stone, Louisiana State University; Klaus Meyer-Arendt, University of West Florida. Trip Capacity: 50 Cost is \$310 per person (includes transportation, 4-nights hotel stay, 4 dinners, 4 box lunches, 3 breakfasts. Please bringing spending money for meals not included in trip. Price is based on double occupancy at hotel - attendees wishing to have a single room will pay a surcharge.)

This field trip will tour one of the most rapidly changing coastal areas in the world. From fast-degrading coastal wetland and barrier island environments in the Mississippi Delta Plain to the economic and social changes on the Mississippi Gulf coast, participants will visit an array of coastal environments and communities on the central Gulf of Mexico coast from Louisiana to Florida. Site visits will include evolution of coastal landforms, contemporary process issues (especially hurricane impacts and responses), and the nature of the coastal communities facing these challenges.

We are strongly encouraging students to attend this field trip. The IGU may be able subsidize the fee for a limited number of students. To obtain more information on this option, please contact Dr. Norbert Psuty, Rutgers University, via email at [psuty@imcs.rutgers.edu](mailto:psuty@imcs.rutgers.edu).



If you are interested in this trip, please take advantage of the online registration from found at the AAG web site. We would like you to register early so that we can get an accurate head count and use that to make the arrangements for the field excursion. The trip will have a variety of cultural and physical attractions, we encourage your traveling companions to attend.

Unable to attend the *IGU Field Trip*? Check out one of the 16 shorter field trips that have been organized by the AAG and other Specialty Groups. These range from: 1) Southwest Louisiana Chenier Plain: Wetlands, Wildlife & People, 2) Acadiana and Courir du Mardi Gras, 3) Battle of New Orleans, or 4) Touring Fauborg Tremé: New Orleans' Historic Afro-Creole Enclave and many more. For more information the field trips, see [http://www.aag.org/AnnualMeetings/field\\_trip\\_descriptions.pdf](http://www.aag.org/AnnualMeetings/field_trip_descriptions.pdf).

## Coastal GeoTools'03 Conference Notes

Coastal GeoTools '03 held in Charleston, South Carolina on January 6 to 9, 2003 has become one of the most important conferences for the coastal resource management community. If your program is using geospatial technologies or planning to use them in the near future, I would highly recommend that you consider sending a representative to the next conference in 2005. Participants leave the conference more aware of innovative uses of technology and more confident in their ability to make technology-related decisions.

Building on the tremendous success of the two previous Coastal GeoTools conferences held in April 1999 and January 2001, the NOAA Coastal Services Center (sponsor of the conference) organized more technical presentations, discussion forums, and training sessions than ever before.

Tools profiled in this three-day conference include geographic information systems (GIS), remote sensing, the Global Positioning System, and the Internet. Presenters from a wide variety of government, academic, and industry organizations related their successes and challenges in integrating spatial technologies and coastal resource management. The GeoTools'03 Proceedings are available at the NOAA Coastal Services Center website at <http://www.csc.noaa.gov/geotools/>.

## Upcoming Conferences

**March 2 to March 5, Geospatial Information and Technology Association Conference XXVI** in San Antonio, Texas. Need more information? Visit [www.gita.org/events/annual/26/intro.html](http://www.gita.org/events/annual/26/intro.html).

**March 5 to March 8, 99<sup>th</sup> Annual Meeting of the Association of American Geographers** in New Orleans, Louisiana. Need more information? Visit [www.aag.org](http://www.aag.org).

**April 13 to April 16, Coastal & Estuarine Habitat Restoration** in Baltimore, Maryland. Need more information? Visit [www.estuaries.org](http://www.estuaries.org).

**May 3 to May 9, ASPRS Annual Conference** in Anchorage, Alaska. Need more information? Visit [www.asprs.org/alaska2003/index.html](http://www.asprs.org/alaska2003/index.html).

**May 18 to May 23, Coastal Sediments'03** in Clearwater Beach, Florida. Need more information? Visit [www.coastalsediments.net](http://www.coastalsediments.net).

**June 4 to June 6, Oceanography Society-Oceanology International Americas (TOS-OIA) Ocean Conference** in New Orleans, Louisiana. Need more information? Visit [www.oiamericas.com](http://www.oiamericas.com).

**June 23 to June 25, Coastal Engineering 2003** in Cadiz, Spain. Need more information? Visit [www.wessex.ac.uk/conferences/2003/coastal03/index.html](http://www.wessex.ac.uk/conferences/2003/coastal03/index.html)

**July 7 to July 11, ESRI International User Conference 2003** in San Diego, California. Need more information? Visit [www.esri.com/events/uc/index.html](http://www.esri.com/events/uc/index.html).

**July 13 to July 17, Coastal Zone'03** in Baltimore, Maryland. Need more information? Visit [www.csc.noaa.gov/cz2003](http://www.csc.noaa.gov/cz2003).

**August 26 to August 29, Coastal Structures Conference** in Portland, Oregon. Need more information? Visit [www.asce.org/conferences/coastal2003](http://www.asce.org/conferences/coastal2003).

**September 22 to September 26, Oceans 2003 -Marine Technology and Ocean Science** in San Diego, California. Need more information? Visit [www.oceans2003.org](http://www.oceans2003.org).

**October 17 to 18, 2003, CoastGIS'03** in Genova, Italy. Need more information? Visit [www.gisig.it/coastgis/home.htm](http://www.gisig.it/coastgis/home.htm).

## University of Southern Mississippi Faculty Positions

**Mississippi, Hattiesburg 39406-5051.** The University of Southern Mississippi, Department of Geography, invites applications for three full-time, tenure-track faculty at the rank of **Assistant Professor**, commencing fall 2003. The University is recruiting for three faculty positions, including two involving GIScience/Remote Sensing. Coastal emphasis is a plus. The department seeks to hire:

**Position 1: Physical Geographer.** The successful applicant should have research and teaching interests in physical/environmental geography. A broad range of subspecialties is welcomed; our goal, however is to build strength in geomorphology, coastal studies, and tropical studies. Candidates should be able to apply GIS to their research and assist students with GIS in physical geography applications. Candidates would also be expected to teach physical field methods.

**Position 2: GIScience/Land Use Specialist.** USM seeks candidates with research experience in land use/land cover change, regional human-environment interactions, or conservation. The candidate will be expected to teach Remote Sensing and GIS at NASA/USM's Stennis Space Center and Gulf Park campuses. The department offers a master's in Geographic Information Technology at the Stennis Campus.

**Position 3: Cultural Geographer.** We seek a cultural geographer with extensive research and background in the U.S. South with emphasis on land use. Experience should include ethnographic studies, interest in population and human resources, and GIS is desirable. Foreign field experience (Central America, Europe, or Australia) is also desirable.

The candidates will be expected to teach general education, undergraduate, and graduate (including doctoral) courses, as well as sustain research and grantsmanship in their specialization. The candidates will also be expected to support the department's strong programmatic emphasis in Geographic Information Technology and be centrally involved in building upon departmental/university strengths in physical/environmental geography. The candidates will also have the opportunity to work with the college's doctoral program in International Development.

The university maintains a teaching and research partnership with NASA's Stennis Space Center. The department houses a GIS/RS lab and is actively involved in the Mississippi Space Commerce Initiative. The department is also in the process of establishing a Center for Geospatial Studies on the Hattiesburg campus and currently offers undergraduate and graduate concentrations in Geographic Information Technology, as well as a GIT certificate. The Geography Department maintains a strong alliance with the university's departments of Coastal Science and Biology and Geology. The faculty members of the Department of Geography have a strong focus on international research/field programs in Australia, Jamaica, Cuba, Great Britain, and Central America.

Applicants must have a Ph.D. at the time of appointment. Applications should include a personal statement of background and experience relevant to the position, especially research and teaching support, a dated curriculum vitae, and names and addresses (including e-mail) of three referees. Applications should be submitted no later than February 26, 2003, but the search may continue until a suitable candidate is appointed. All materials should be sent to Dr. Clifton Dixon, Chair, Department of Geography, Box 5051, The University of Southern Mississippi, Hattiesburg, MS 39406-5051. E-mail: [c.dixon@usm.edu](mailto:c.dixon@usm.edu), voice: (601) 266-4729, FAX: (601) 266-6219. The University of Southern Mississippi is an equal opportunity employer; diversity is highly valued. Minorities and women are encouraged to apply. Visit the Southern Miss Web site at <http://www.usm.edu>.

## **Musings from the Chair - Klaus J Meyer-Arendt**

Hello, CoMa members!

Well, folks, the AAG meeting is soon upon us. It's been a little hectic, but we have put together a good program. We have sessions dealing with coastal issues every single time block of the conference. The IGU-cosponsored *Coasts Under Stress* sessions are all scheduled on Friday and Saturday, and the 4-day coastal field trip begins on Sunday. Although initially set up to accommodate guests from various foreign countries, the IGU field trip is open to anyone.

As a veteran of the 1978 AAG meeting in New Orleans, I can say that this year's program is quite impressive. And I'm glad to see that my advisor H.J. Walker, who was the "kingpin" behind the 1978 IGU meeting, is on the program as a presenter! I hope to see you all at the business meeting on Friday night as we prepare for next year's 100<sup>th</sup> meeting of the AAG.

Klaus Meyer-Arendt, Chair.